



Skills Needed for this Pattern

Abbreviation	Definition
CO	Cast On
K (K1)	Knit (Knit 1 stitch)
P (P1)	Purl (Purl 1 stitch)
St(s)	Stitch(es)
RS	Right Side. The side meant to be seen, opposite of inside of work.
WS	Wrong Side. Opposite of RS.
SKP	Slip, Knit, Pass. Slip 1, Knit 1, Pass slipped stitch over the knit stitch.
K2tog	Knit 2 stitches together like one
p2tog	Purl 2 stitches together like one
Sl	Slip
beg	beginning
Rnd(s)	Round(s)



HiyaHiya Ruby Sock Knitting Pattern --- QHSof6

Copyright 2011-2012 Qianer Huang
(Shanghai Hiya Co., Ltd.)

Designed by Qianer Huang (HiyaHiya)

Distributed in North America by The
KnittingZone Inc.

**These beautiful ruby socks will compliment
any wardrobe.**

Size: Woman's medium (9" foot).

Yarn: 100 grams approximately 430 yards of
fingering weight yarn. (**shown in Malabrigo
Sock Yarn**)

Gauge: 12 stitches*12 rows=1 inch in K1, P1
ribbing sts.

**Needle size: HiyaHiya Circular and Double
Point Knitting Needles. US 4 and US 2
(3.50mm and 2.75mm)**



Ruby Stitch Pattern:

Rnd 1, *Slip 2 sts to cable needle and hold in back, K2, K2 from cable needle, Slip 2 sts to cable needle and hold in front, K2, K2 from cable needle*, Repeat from * 9 times,

Rnds 2, 3, 4, 6, 7, 8, Knit,

Rnd 5, *Slip 2 sts to cable needle and hold in front, K2, K2 from cable needle, Slip 2 sts to cable needle and hold in back, K2, K2 from cable needle*, Repeat from * 9 times,

Repeat Rnds 1-8

Socks (make 2)

Beg at top of sock, cast on 72 sts, with US4 needle. Knit from the US4 onto your choice of a 9" or 11" circ or dpn, US2 needle. Join, being careful not to twist. Use a marker to note beginning of rounds. Begin knitting in K1, P1 ribbing sts. and knit circularly for approximately 1 inch. Begin knitting in Ruby Stitch Pattern, knit even until the piece measures approximately 5" from beg. Divide across needles. (36, 36). Slip 36 instep sts onto stitch holder.

Heel flap (worked back and forth on 36 heel sts only)

Knit in Heel Stitch Pattern in K1, P1 ribbing st. until heel flap measures 2 1/4 in. (5.7 cm), end with a Row 2.

Turn Heel

Row 1: K 20, ssk, k 1, turn.

Row 2: Sl 1, p 5, p2tog, p 1, turn.

Row 3: Sl 1, k 6, ssk, k 1, turn.

Row 4: Sl 1, p 7, p2tog, p 1, turn.

Row 5: Sl 1, k 8, ssk, k 1, turn.

Row 6: Sl 1, p 9, p2tog, p 1, turn.

Continue in this way, working 1 more st between dec until all 36 sts have been worked, end with a WS row - 20 sts for heel.

Next Rnd(your choice in **DPNs**): K across heel sts, with same needle, pick up and k 19 sts along heel flap, with 2nd needle work across 16 sts of instep in Instep Stitch Pattern(Ruby stitch pattern), with 3rd needle, work across 20 sts of instep in Instep Stitch Pattern(Ruby Stitch Pattern), with 4th needle pick up and k 19 sts along heel flap, k across 10 heel sts - 94 sts on a rnd. Beg of rnd is at center of heel sts.

Next Rnd(your choice in **9"or 11" circular**): With the first needle, K across heel sts, pick up and k 19 sts along heel flap, place marker; with the second needle, work across 36 sts of instep in Instep Stitch Pattern(Ruby Stitch Pattern), place marker; with the first needle, pick up and k 19 sts along heel flap, k across 10 heel sts - 94 sts on a rnd. Beg of rnd is at center of heel sts.

Shape Gusset(your choice in **DPN**)

Rnd 1: Continue working instep sts in Instep Stitch Pattern(Ruby Stitch Pattern) and knit the bottom sts in stockinette sts

Rnd 2: K to last 3 sts on 1st needle, k2tog, K1; k across instep sts; on 4th needle, K1, ssk, k to end of rnd.

Rep Rnds 1 and 2 until 72 sts rem.

Shape Gusset(your choice in **two 9"or 11" circulars**)

Knit with **two 9"or 11" circulars (Use one needle for the top stitches and another needle for the bottom**

stitches(Heel sts.)

Rnd 1: Continue working instep sts in Instep Stitch Pattern(Ruby Stitch Pattern) and knit the bottom sts in stockinette sts.

Rnd 2: With the first needle, knit until 3 sts before your marker on the right gusset, k2tog, K1; With the second needle, k across instep sts until your marker on the left gusset; With the first needle, K1, ssk, k to end of rnd.

Rep Rnds 1 and 2 until 72 sts rem.

Foot

Work even instep sts in Instep Stitch Pattern(Ruby Stitch Pattern) and knit the bottom sts in stockinette sts in rnd until foot measures 7 1/2 in. (19.3 cm), or 2 in. (5 cm) less than desired total length. (If you knit in **9" or 11" circular**, you may knit foot with **one 9"or 11" circular.**)

Shape Toe(your choice in DPNs)

Knit in stockinette sts.

Rnd 1: Knit to last 3 sts on 1st needle, k2tog, k1, on 2nd needle k1, ssk, k to last 3 sts on 3rd needle, ssk, k1, on 4th needle, k1, k2tog, k to end of rnd.

Rnd 2: Knit.

Rep Rnds 1 and 2 until 24 sts rem. Divide remaining sts onto 2 needles and graft toe together.

Shape Toe(your choice in **two 9"or 11" circulars**)

Knit in stockinette sts.

Rnd 1: With the first needle, knit until 3 sts before your marker on the right side, k2tog, k1; with the second needle, k1, ssk, knit until 3 sts before your marker on the left side, ssk, k1; with the first needle, k1, k2tog, k to end of rnd. (**Use one needle for the top stitches and another needle for the bottom stitches.**)

Rnd 2: Knit.

Rep Rnds 1 and 2 until 24 sts rem. Divide remaining sts onto 2 needles and graft toe together.

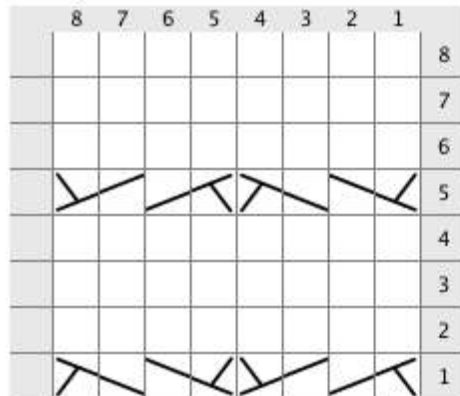
FINISHING: Weave in ends.

New from HiyaHiya

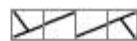
Puppy Snips



Ruby Stitch Pattern



Legend:



c2 over 2 right

sl2 to CN, hold in back. k2, k2 from CN



c2 over 2 left

sl 2 to CN, hold in front. k2, k2 from CN



knit

knit stitch

Notes:

Repeat 9 times